

Office SharePoint Server Farm Architecture & Design Fundamentals

spence@harbar.net

SUGUK, 10th November 2007



SharePoint User Group UK



Agenda

- Historical Perspective
- Design Goals
- Server Roles in MOSS 2007
- Topology Constraints
- Models....

Historical Perspective

- SharePoint Portal Server 2001 had no constraints
- SharePoint Portal Server 2003 had constraints
- Office SharePoint Server 2007 has no constraints (sort of!)

Design Goals

- Scalability
- Performance
- Security (Isolation & Least Privilege)
- Flexibility
- Provisioning

Server Roles in MOSS 2007

- Encapsulate functionality
 - Windows Services
 - IIS Web Sites
 - WSS Provisioning
 - Executables
- However, all the bits are on all the boxes (if you install in Complete mode - recommended)
- Key to designing your Farm Topology

Server Roles in MOSS 2007

- Central Administration
- Windows SharePoint Services Incoming Email
- Windows SharePoint Services Web Application
- Office SharePoint Server Search
- Windows SharePoint Services Help Search

- Excel Calculation Services
- Document Conversions Launcher
- Document Conversions Load Balancer

- WSS Outgoing Email
- SQL Server

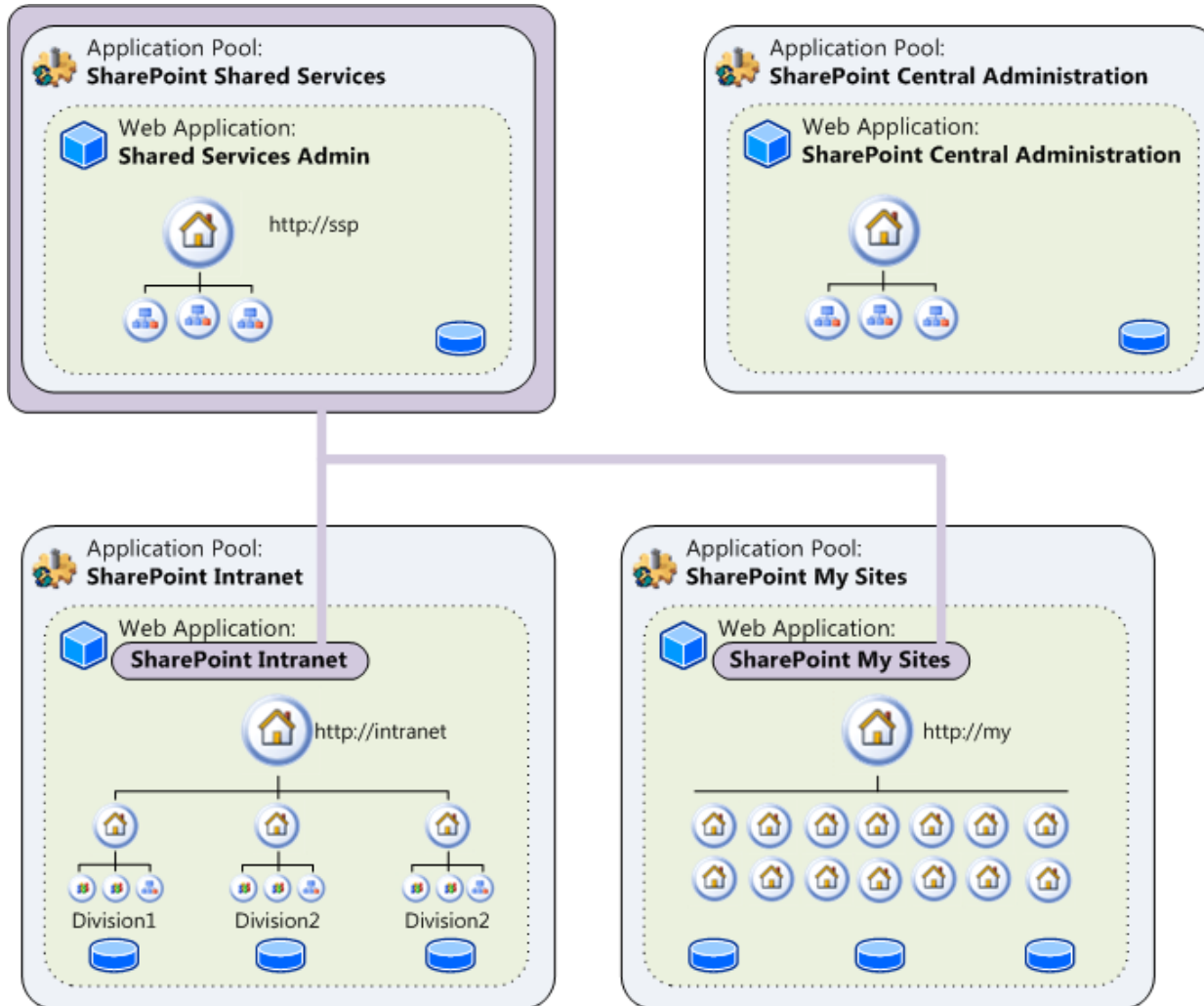
“Index” and “Search Query” Roles

- “Index” role
 - Crawls Content
 - Creates Index
 - Propagates Indexes to...
- “Search /Query” role
 - Performs query against propagated index
 - Returns results to Web Application
- You can only have one “Index” Server (per SSP)

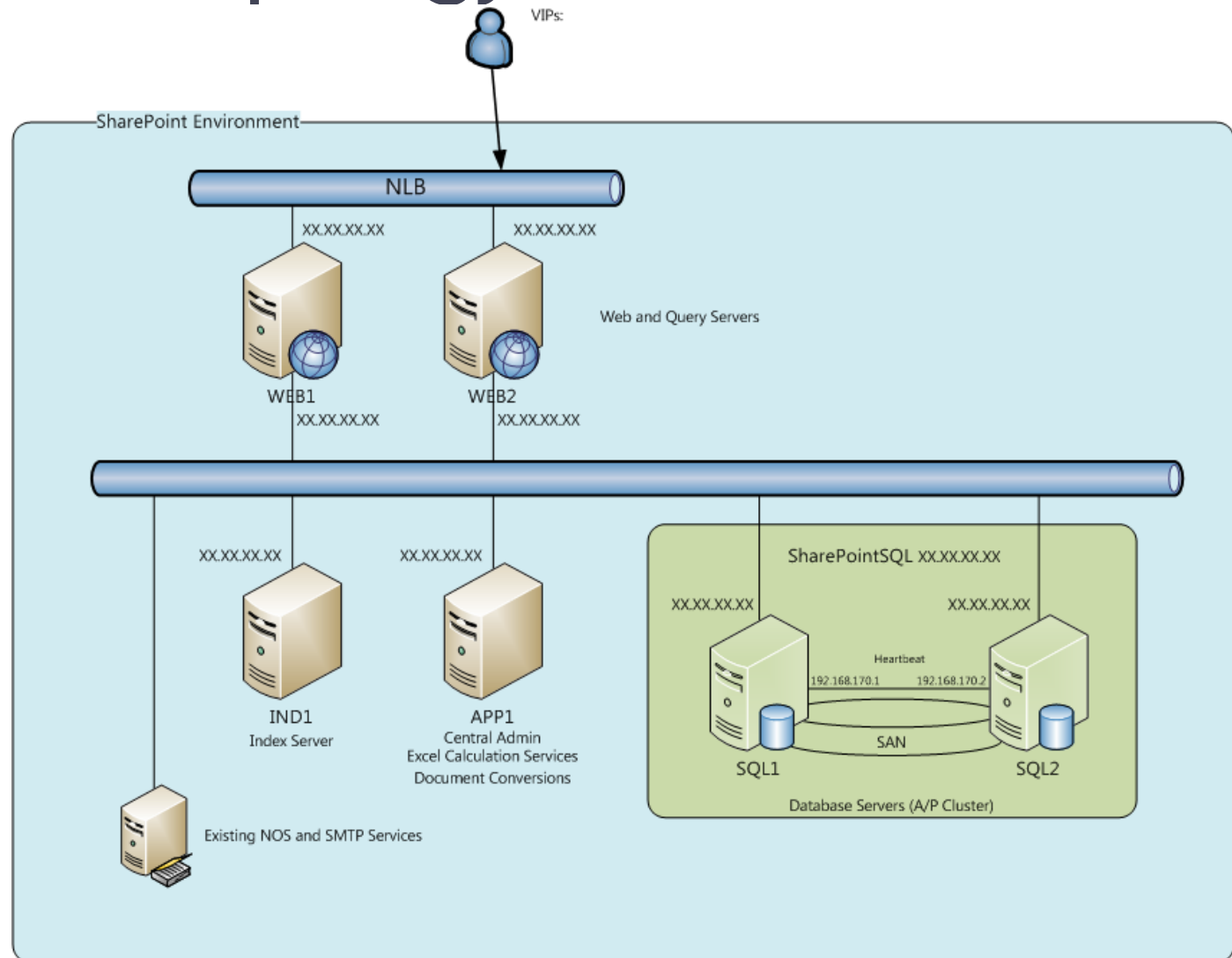
Designing a Topology

- It's all about trade offs and compromise
- Understanding usage is critical
 - Not just end user patterns
- Don't configure elements you are not using!
- Always start with logical architecture

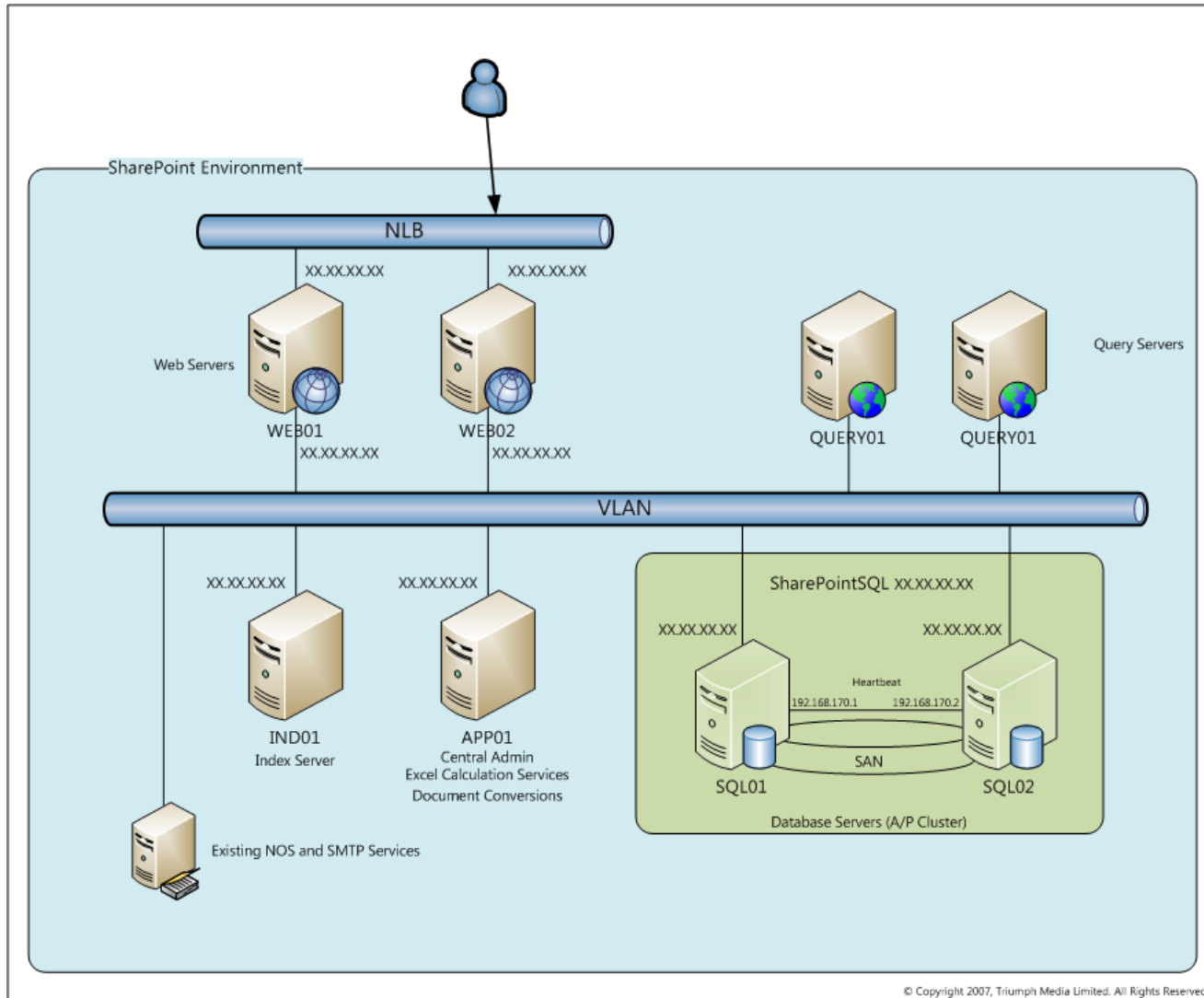
Logical Architecture



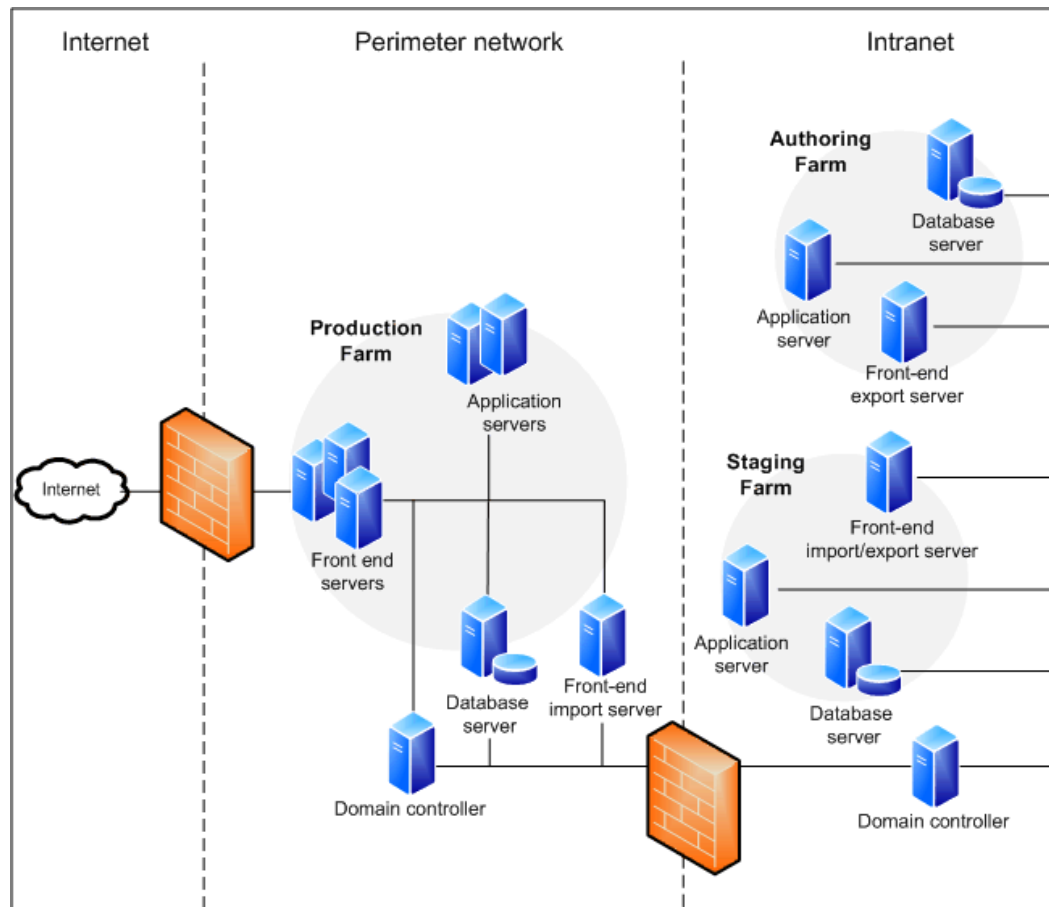
Common Topology



Common Topology



Common Topology



Discussion...

- Essential Reading:
Planning & Architecture for MOSS
<http://www.harbar.net/archive/2007/03/31/Downloadable-books-for-Office-SharePoint-Server-2007.aspx>