

Office SharePoint Server 2007 & Windows Server 2008

Spencer Harbar (spence@harbar.net)



SharePoint User Group UK
June 19th 2008, Edinburgh



Agenda

- Overview
- Core improvements
- MOSS Installation
- Internet Information Services 7 (IIS)
- PowerShell
- Windows Remote Management
- Q&A

Windows Server 2008 Highlights

- Managability
- Security
- Extensibility
- Virtualisation
- Performance and Reliability

Managability

- Server Manager
- Reliability Manager
- Server Management (700+new settings)
- Event Viewer & Task Scheduler
- Create configuration as templates for reuse
- Everything is in the box

Windows Server 2008 Server Manager

Demo

Security

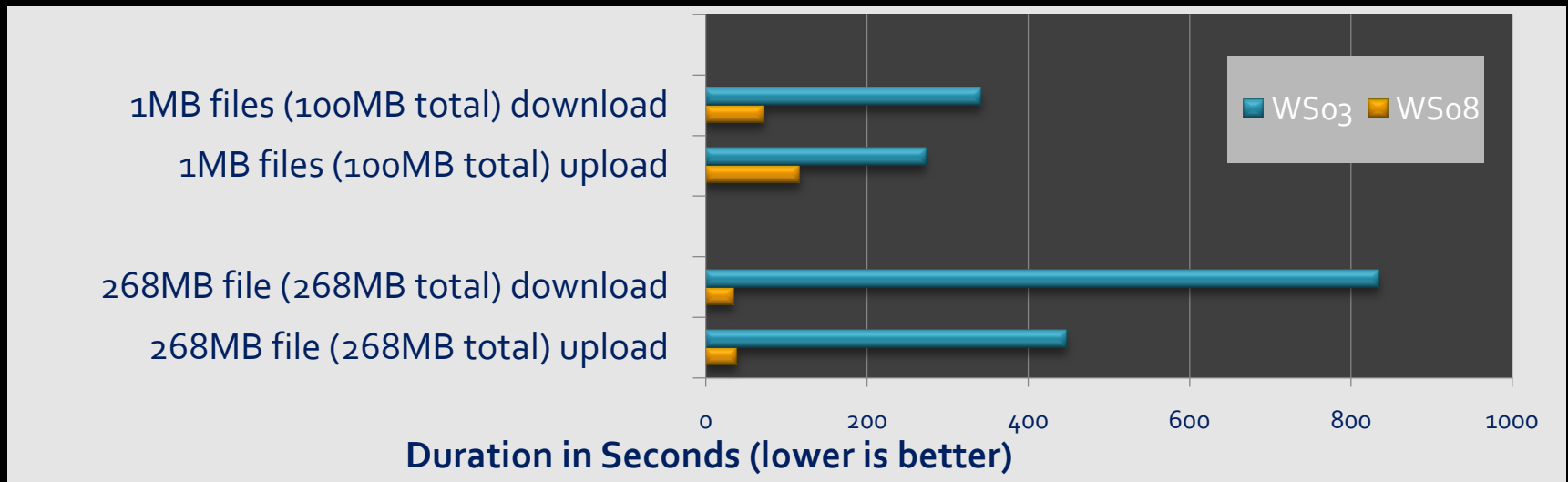
- Kernel Mode Authentication
- Security Configuration Wizard
- Firewall
- Enhanced URLScan
- Minimal footprint
- Minimal services

Performance & Reliability

- Hot replace memory and processors
- Next Generation TCP Stack
- SMB 2.0
- Windows Hardware Error Architecture (WHEA)

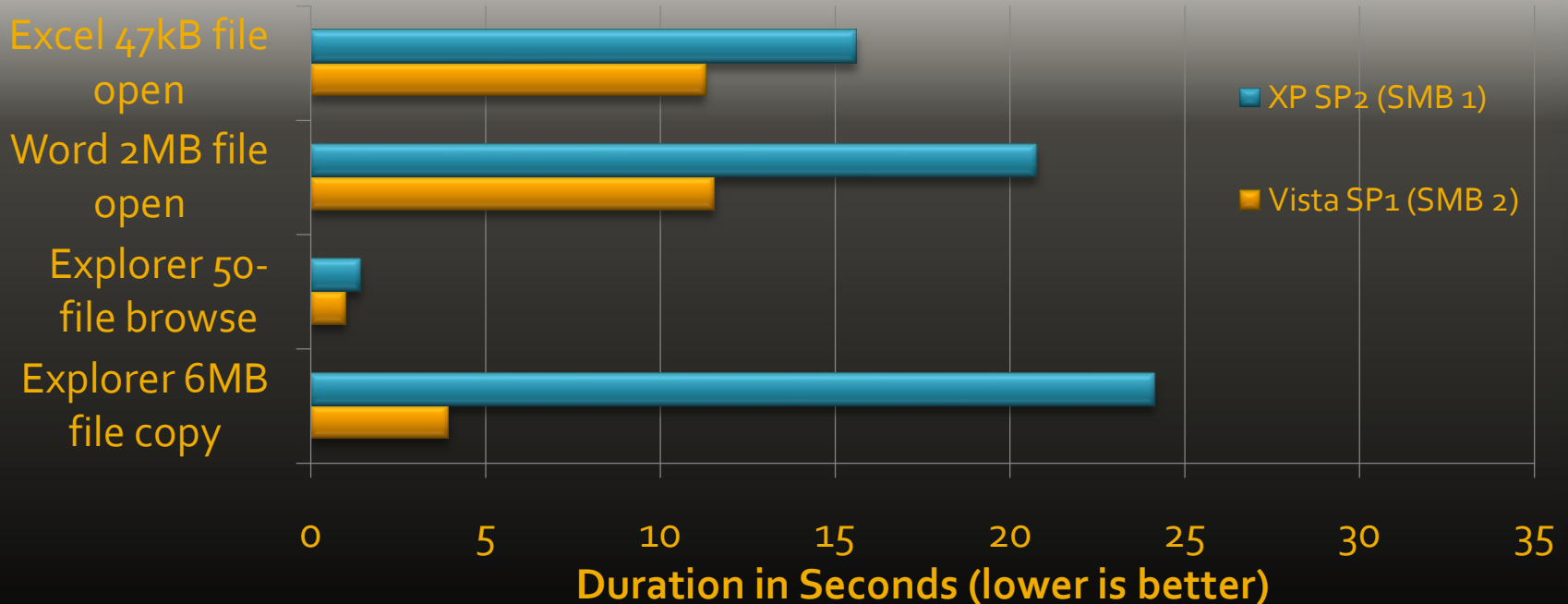
Remote Large File Copy over WAN

■ 100ms Latency



Remote File Applications

Office 2007 and Shell Operations WAN (100ms latency)



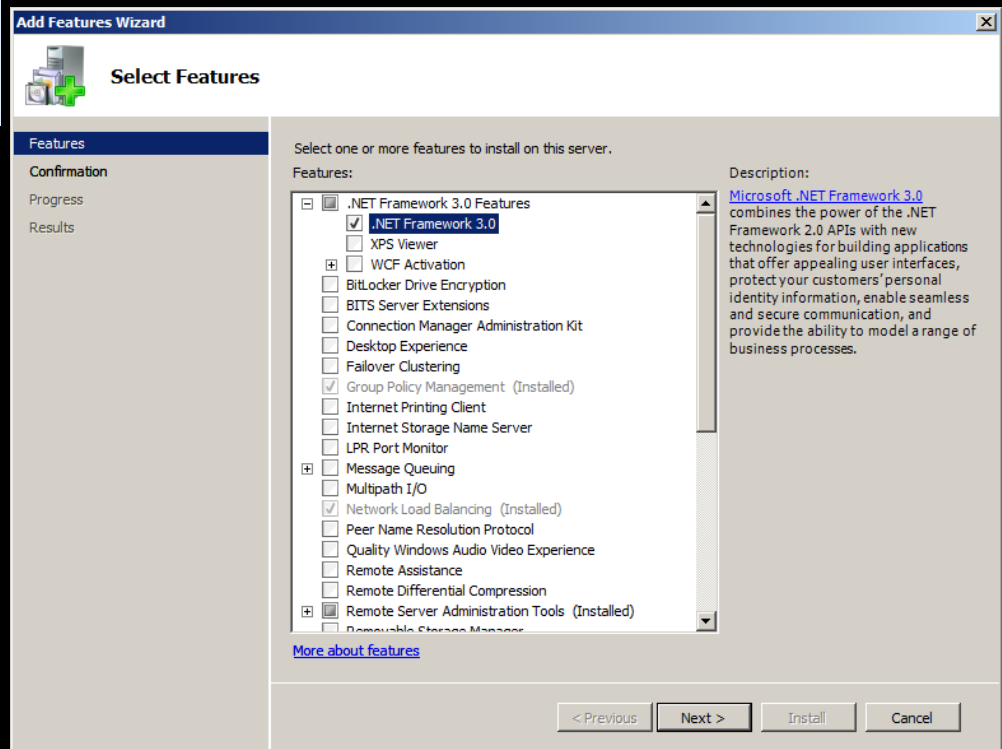
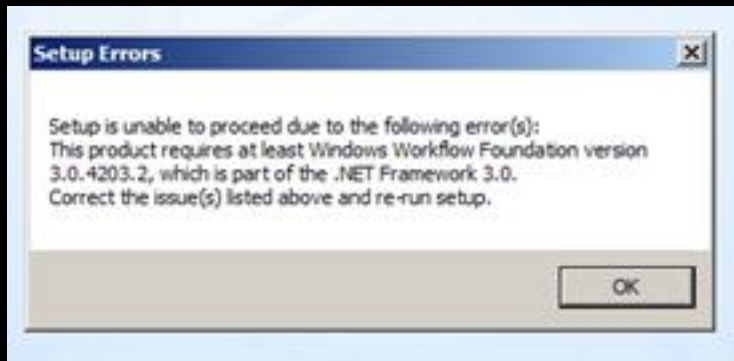
OK, so what about SharePoint?

- 100% supported with MOSS SP1
- Configuration system
- Leverage core improvements
- Leverage IIS
- Futures
 - WS 2008 is last x86 version
 - MOSS 2007 is last x86 version

Installation

- MOSS RTM
 - Requires manual configuration of dependencies
 - Very messy
 - Not supported!
- MOSS SP1
 - Automatically installs and configures IIS7
 - Requires .NET Framework 3.0

Installation: .NET Framework 3.0



Roles on *this* box before install

The screenshot displays the Windows Server Management console with three main sections: Server Summary, Roles Summary, and Features Summary.

- Server Summary:** Includes a help link for "Server Summary Help".
- Roles Summary:** Shows "Roles: 4 of 17 installed". The installed roles are:
 - Active Directory Domain Services
 - DNS Server
 - Hyper-V
 - Windows Deployment ServicesOn the right, there are three action buttons: "Go to Roles", "Add Roles", and "Remove Roles". A help link for "Roles Summary Help" is also present.
- Features Summary:** Shows "Features: 6 of 35 installed". The installed features are:
 - .NET Framework 3.0 Features
 - .NET Framework 3.0
 - Group Policy Management
 - Network Load Balancing
 - Remote Server Administration Tools
 - Role Administration Tools
 - Active Directory Domain Services Tools
 - Active Directory Domain Controller Tools
 - DNS Server Tools
 - Windows Deployment Services Tools
 - Hyper-V Tools
 - Feature Administration ToolsOn the right, there are two action buttons: "Add Features" and "Remove Features". A help link for "Features Summary Help" is also present.

Role Services after install

The screenshot displays the Windows Server Manager interface. On the left, a tree view shows the 'Roles' section expanded to 'Web Server (IIS)'. The main pane is titled 'Web Server (IIS)' and contains a table of installed role services. A description at the bottom explains that the Web Server provides support for HTML Web sites and optional support for ASP.NET, ASP, and Web server extensions.

Web Server (IIS)
Provides a reliable, manageable, and scalable Web application infrastructure.

Role Services: 34 installed

Role Service	Status
Web Server	Installed
Common HTTP Features	Installed
Static Content	Installed
Default Document	Installed
Directory Browsing	Installed
HTTP Errors	Installed
HTTP Redirection	Not installed
Application Development	Installed
ASP.NET	Installed
.NET Extensibility	Installed
ASP	Installed
CGI	Installed
ISAPI Extensions	Installed
ISAPI Filters	Installed
Server Side Includes	Installed
Health and Diagnostics	Installed
HTTP Logging	Installed
Logging Tools	Installed
Request Monitor	Installed
Tracing	Installed
Custom Logging	Not installed
ODBC Logging	Not installed
Security	Installed
Basic Authentication	Installed
Windows Authentication	Installed
Digest Authentication	Installed
Client Certificate Mapping Authentication	Not installed
IIS Client Certificate Mapping Authentication	Not installed
URL Authorization	Not installed
Request Filtering	Installed
IP and Domain Restrictions	Not installed
Performance	Installed
Static Content Compression	Installed
Dynamic Content Compression	Installed
Management Tools	Installed
IIS Management Console	Installed
IIS Management Scripts and Tools	Not installed
Management Service	Not installed
IIS 6 Management Compatibility	Installed
IIS 6 Metabase Compatibility	Installed
IIS 6 WMI Compatibility	Installed
IIS 6 Scripting Tools	Installed
IIS 6 Management Console	Installed
FTP Publishing Service	Not installed
FTP Server	Not installed
FTP Management Console	Not installed

Description:
[Web Server](#) provides support for HTML Web sites and optional support for ASP.NET, ASP, and Web server extensions. You can use the Web Server to host an internal or external Web site or to provide an environment for developers to create Web-based applications.

Last Refresh: 14/06/2008 01:10:13 [Configure refresh](#)

MOSS & IIS 7

- Doesn't directly use any of the new features
 - Requires legacy components (for the install mostly, but also central admin – create new web app) none of these use the new APIs
 - App pools run in legacy mode
 - Minor niggles with Kernel mode authN
- But that doesn't mean that you can't

IIS 7 Highlights

- IIS7 has a decent GUI
 - They finally fixed it!
 - It even has extensibility
- Unified IIS & ASP.NET configuration
 - No more metabase
 - Enables true xcopy deployment
- Managability
 - Failed Request Tracing

IIS 7 Highlights

- Modular
 - Just install the bits you need
 - Reduces the attack surface
 - Don't like Microsoft's implementation? Rip it out and replace with yours
- New managed pipeline
 - Enables asp.net features for all file types
 - Not available to SharePoint web apps yet
- Extensibility
 - Command line and managed APIs

Internet Information Services 7

Demo

PowerShell

- .NET-based interactive shell and scripting language
 - Interactive, programmable, secure, and task-oriented
 - Efficient control and automation of admin tasks
 - Manage both desktops and servers in mixed environments
- Core Windows administration technology
 - In the box for Windows Server 2008
 - Available as a download for Windows XP, Windows 2003, Windows Vista
 - Extensible for developers to easily build their own tools
 - Enables strong command line and GUI integration
- Broad adoption
 - Exchange Server 2007, Microsoft System Center Operations Manager, Microsoft System Center Virtual Machine Manager

WinRM and WinRS

- WinRM - Management “despite” firewalls
 - Implementation of WS-Management protocol
 - Based on HTTP/HTTPS connectivity
 - XML is the data structure
- WinRS (Remote Shell)
 - Executes command line commands and executed locally
 - WINRS <Server> <Command>

Windows PowerShell

Demo



Upgrading

- On Windows Server 2003
 - Upgrade to SP1 or later first
 - Upgrade any Database engine storage to Windows Internal Database Engine SP2
 - Backup your Farm (to separate server)
 - Proceed with OS upgrade
 - Verify Upgrade
- Upgrade Complete - Windows Server 2008

QA & Discussion

- Thanks for your attention!
- Feel free to post queries to the forums at <http://suguk.org>
- Resources
 - <http://technet.microsoft.com/en-us/office/sharepointserver/bb735844.aspx>
 - AMD Developer Case Study
 - Upgrading to 64 bit Windows Server 2008 (Steve Smith & Penny Coventry)